

PART OF NORTH 1/2 OF SEC. 29, T.7N., R.1W., S.L.B. & M.

FAIRFIELD ACRES SUBDIVISION

PLAT III

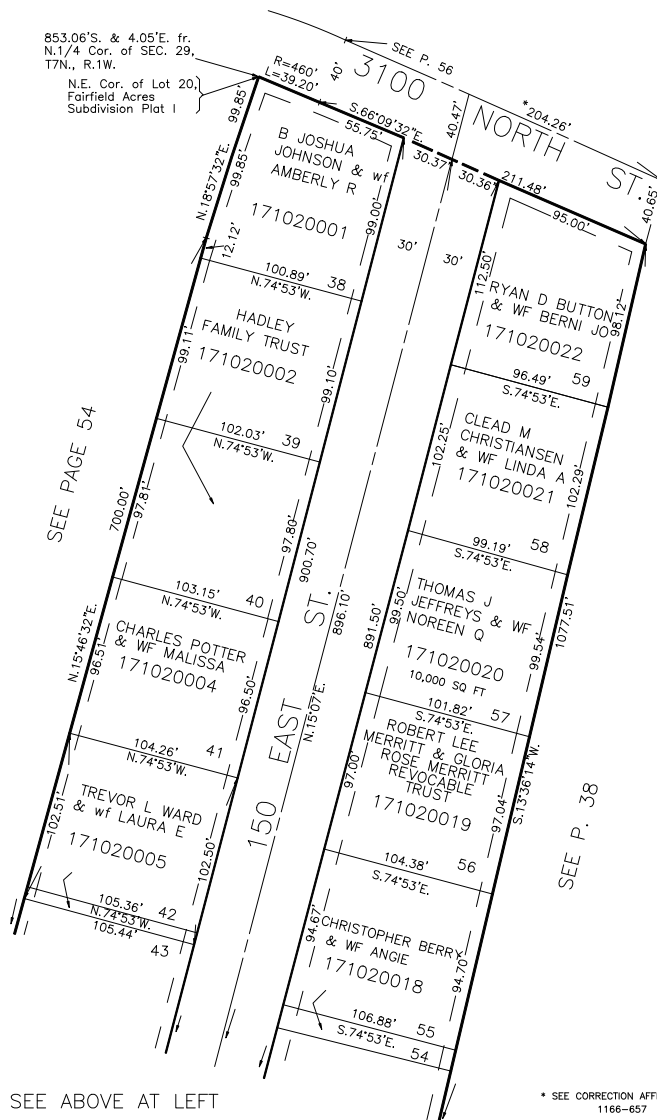
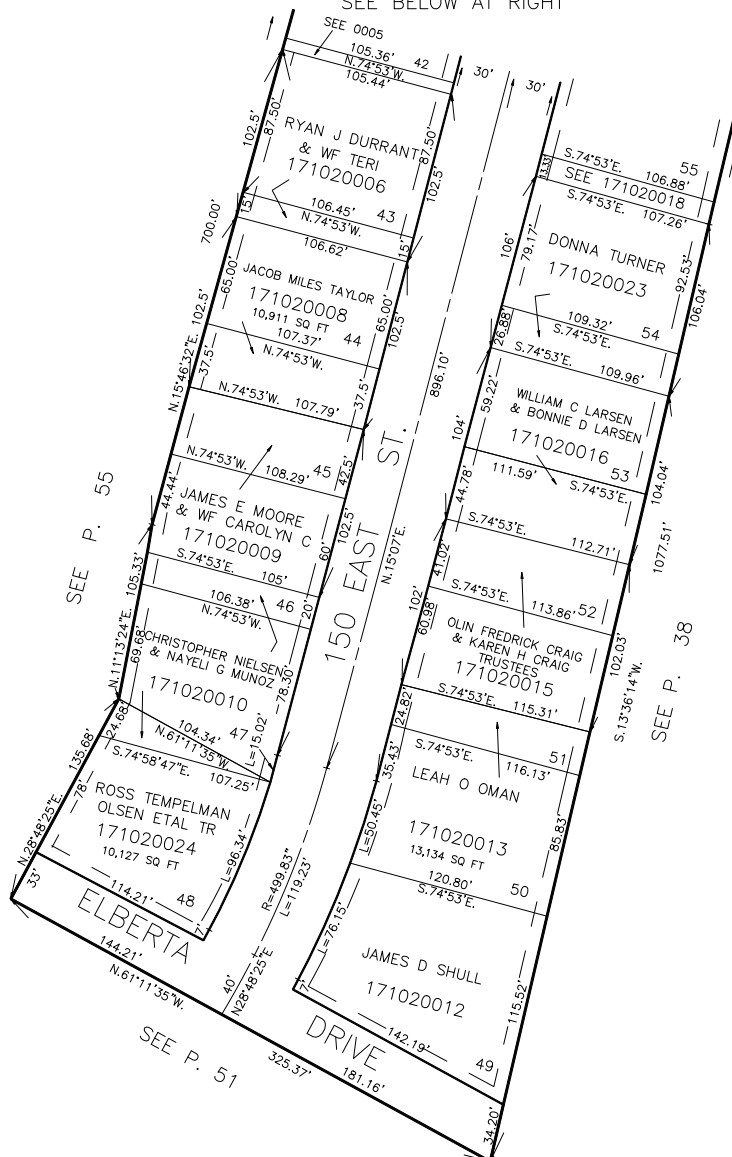
NORTH OGDEN CITY

NOTE: PAGES 103 & 104 OMMITTED.

TAXING UNIT: 10

SCALE 1" = 60'

SEE BELOW AT RIGHT



NOTE: 7' UTILITY & DRAINAGE EASEMENTS
EACH SIDE OF PROPERTY LINE AS
INDICATED BY DASHED LINES
SEE ORIGINAL PLAT IN BOOK 17, PAGE 90

FOR TAX PURPOSES ONLY

* SEE CORRECTION AFFIDAVIT
1166-657